

# Share-VDE Economics & Sustainability

**Tiziana Possemato**

Director at @Cult (Casalini Group)

Coordinator of the Share Family initiative



**Find out more**

<http://bit.ly/44rnqpA>



(Meta)data at the Core: Bridging Human Knowledge and AI Innovation

# A decade of developments

## 2015-2016

- **ALIADA**
- **BIBFRAME update Forum** at ALA Midwinter in Boston
- **Share catalogue** online (universities from southern Italy)
- **Share-VDE** prototype

## 2017-2019

- **Share-VDE** and **LD4P** members' data converted from MARC21 to BIBFRAME

## 2019-2021

- **Share-VDE** – virtual discovery environment for library linked open data
- **Share Family** embraces all LOD Platform initiatives

## 2021-2023

- Ongoing **PCC** data pool
- **Share-VDE 2.0**
- Ongoing **NatBib** working group and shared discovery environment
- **Share Family** towards production

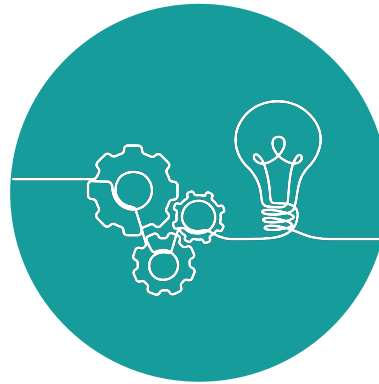
## 2023-2025

- **British National Bibliography** in linked open data (beta version)
- **Parsifal** and **LILLIT** shared discovery environments launch
- **JCricket** collaborative cataloguing editor
- **LOD Platform** version 3

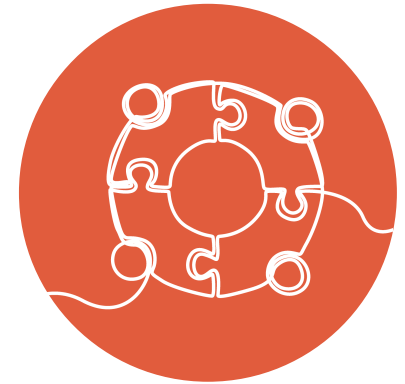
# Developed and driven by libraries, for libraries



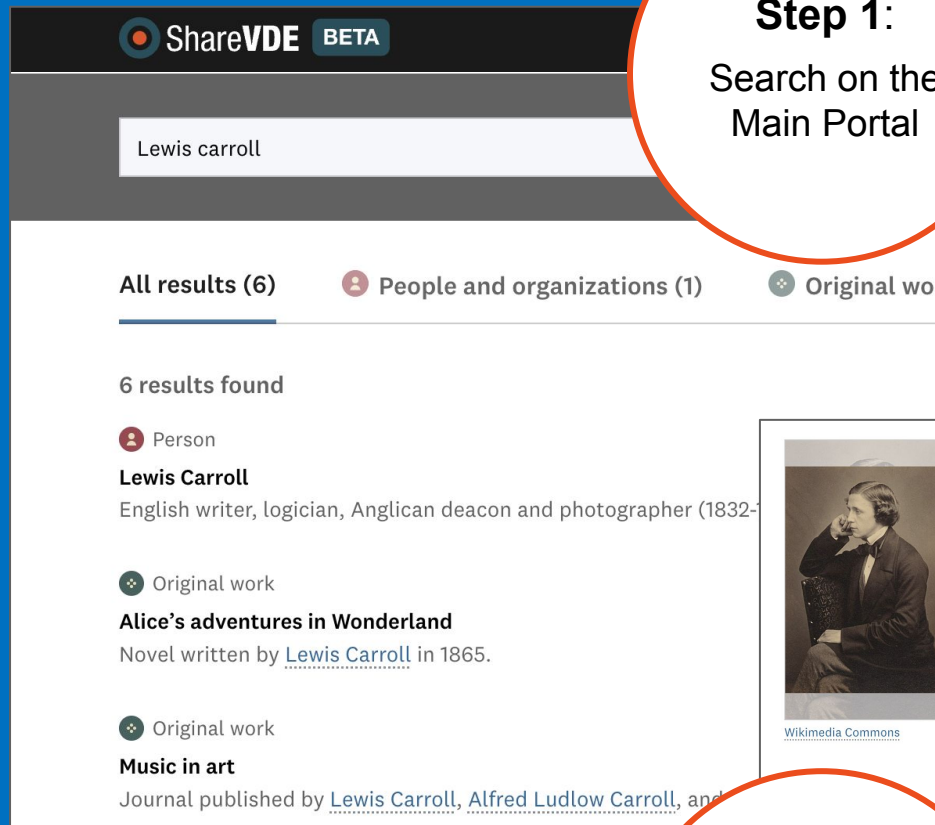
Governed and steered by the **Share Family Advisory Council**, made up of representatives from member institutions.



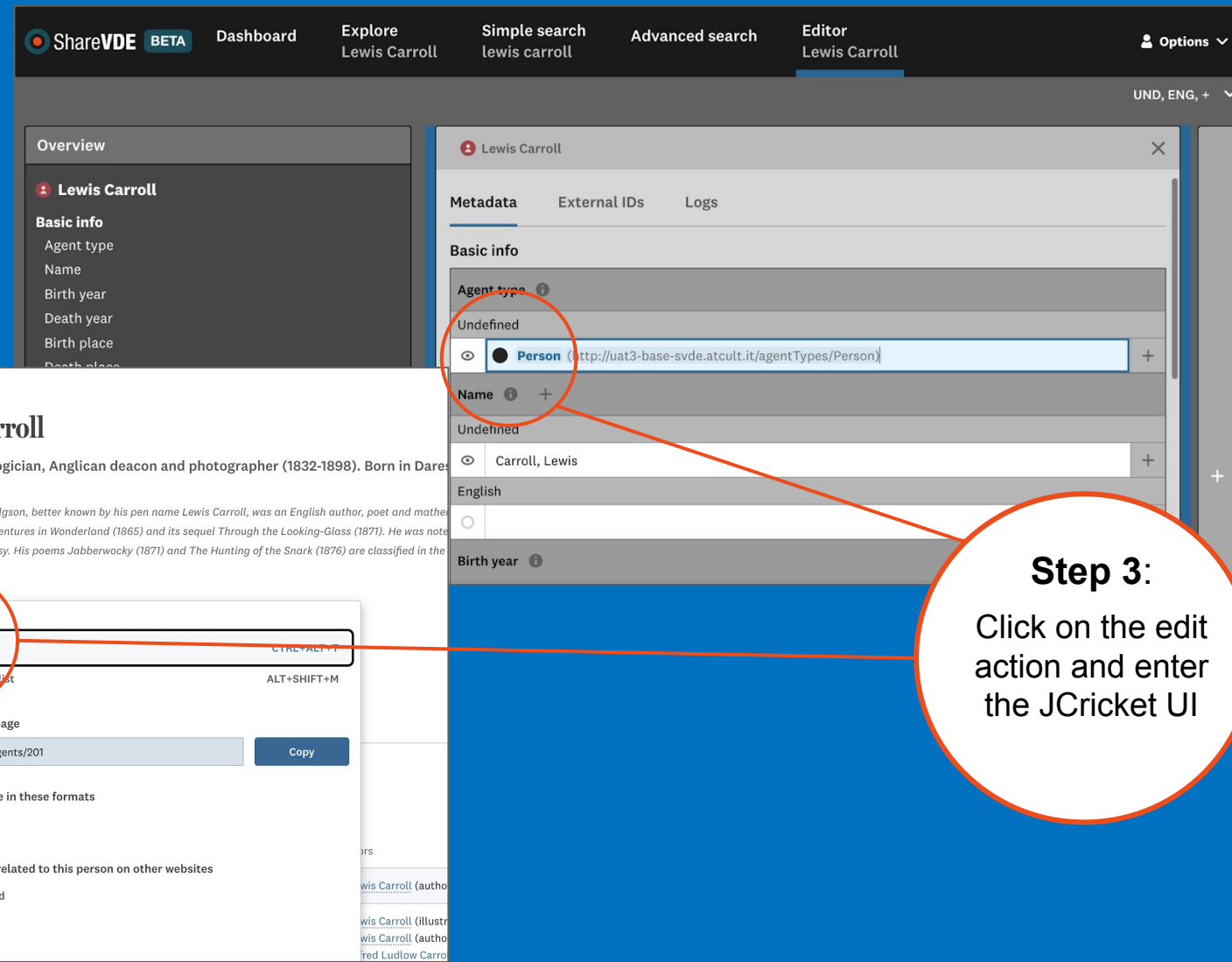
Members and **working groups** actively participate in policy-making and tool development, as well as defining goals.



Expertise, responsibilities and costs are shared across the **community** for the benefit of all.



**Step 1:**  
Search on the  
Main Portal




**Step 2:**  
Enter the entity  
details page


**Step 3:**  
Click on the edit  
action and enter  
the JCricket UI

# Shared tools for collaborative data management

# Share-VDE and the Economics of Openness

A sustainable model for **open metadata** and **community-driven** development

 **Share-VDE shows that openness and sustainability can thrive together**, proving that collaboration is the true engine of bibliographic innovation.

 **From records to relationships:** Share-VDE transforms library metadata into Linked Open Data, connecting knowledge across borders and systems.

 **Metadata belong to everyone.** They are living cultural resources, enriched and sustained by the global library community.





# Open Metadata Policy

## Open Data, Full Freedom

- Institutions have **complete autonomy** in reusing their data
- **Open datasets** at every stage — individual and aggregated
- **Entity URIs** freely reusable, with **no restrictions**



# Open Metadata Policy

## Share Family Open Metadata Policy

Approved by the Share Family Advisory Council  
on March 15<sup>th</sup> 2023; amended on April 9<sup>th</sup> 2025

The Share Family strives to support and invest in open data to freely share information. The community is committed, wherever possible, to share data transformed by its series of Linked Open Data (LOD) processes. The Share Family community has invested great effort to ensure its structured data adhere to the accepted community standards and practices for the library and the open data community.



Share Family data may be used under a CC0 license unless expressly stated otherwise.

The Share Family data pool consists of newly created metadata objects derived from existing data provided by member institutions, enriched and published as RDF, as well as entirely new objects manually created within the system. These data are open and interoperable by humans and machines alike. The Share Family highly encourages their use to promote global dissemination, accessibility, reusability, and discoverability of information resources.

<https://bit.ly/ShareFamily-Open-Metadata-Policy>



# The Knowledge Commons Perspective



**Sustainability grows from shared knowledge**

As Hess and Ostrom\* remind us, open data thrives when governed as a *knowledge commons* — a resource cared for, not owned.



**Share-VDE is a community-powered ecosystem**

Libraries and institutions join forces to build, maintain, and enrich a shared space of open bibliographic data.



**The real power of Share-VDE lies in collaboration**

Its strength comes from *cooperative governance*, not from proprietary control.

\*Hess, Charlotte, and Elinor Ostrom. *Understanding Knowledge as a Commons: From Theory to Practice*. Cambridge, MA: MIT Press, 2007.



# Economics of Collective Reinvestment



**Share-VDE grows through reinvestment, not revenue**  
Its sustainability is nurtured by shared commitment — not commodification.



**The costs are shared, the impact amplified**  
Technology, data, and development are co-funded by member institutions united in a common purpose.



**Membership means contribution, not consumption**  
Each institution helps sustain a cooperative infrastructure that benefits the entire community.

# Collaborative Governance and Shared Responsibility

## **Members shape the future together**

Through the Share-VDE Advisory Council and dedicated working groups on data, identity, and design, every voice helps guide the initiative's evolution.

## **Governance by the community, for the community**


Collective decision-making ensures that every development serves shared goals — not individual profit.

# Development Layer vs. Data Layer

## **Two Layers, One Sustainable Vision**

Share-VDE builds sustainability on two interconnected levels:

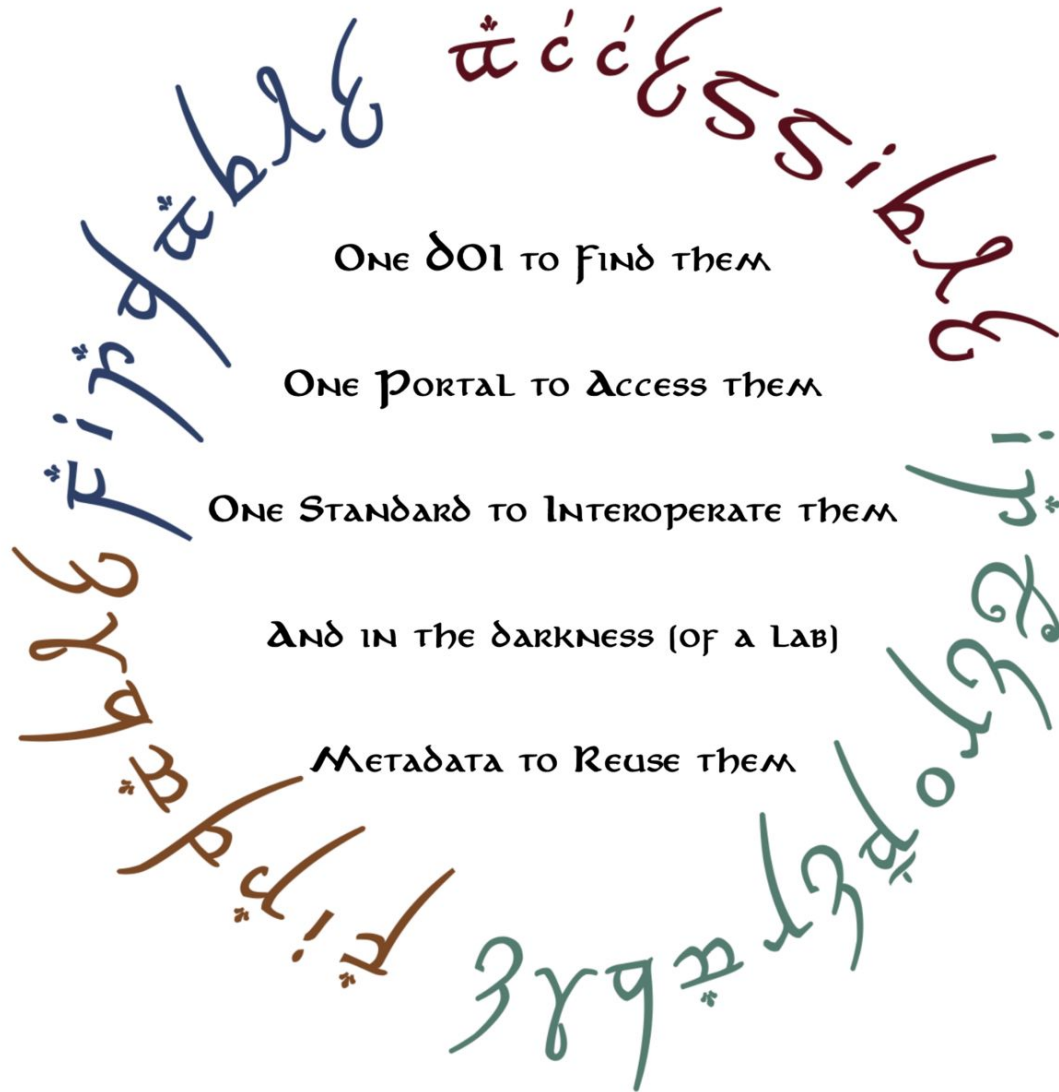
 **Development Layer** – powered by community participation, sustaining infrastructure, code, and workflows.

 **Data Layer** – the outcome of that work: rich metadata and knowledge graphs, released as open data under permissive licenses.

## **Openness with Stability**

This dual-layer model keeps Share-VDE open to all — without compromising reliability or quality.

# Open Standards and Interoperability



[LOR formulation of FAIR principles – Wikimedia Commons, CC BY-SA 4.0]

## FAIR by Design

Share-VDE aligns with the **FAIR principles** — *Findable, Accessible, Interoperable, Reusable* — ensuring seamless links with global datasets like **Wikidata, VIAF, ISNI, LC, IdRef** etc.

## Linked Data, Lasting Access

By maintaining open, linked data, Share-VDE guarantees **long-term accessibility** and smooth **integration with cultural and library infrastructures** worldwide.

# Libraries as Co-Producers of Knowledge

## **Innovation Through Collaboration**

Creativity and innovation flourish through **cooperation, not competition**  
(*commons-based peer production*)\*

 **A Framework Agreement for the Distributed Development Community (DDC)**  
Making all developments **shared, transparent, and sustainable.**

## **Guided by Transparency and Trust**

The **Technical Governance Committee** safeguards transparency and community-driven development.

\*Benkler, Yochai. "Coase's Penguin, or, Linux and the Nature of the Firm." *The Yale Law Journal*, vol. 112, no. 3, 2002, pp. 369-446.



# Framework Agreement for the Distributed Development Community (DDC)

## Framework Agreement for the Distributed Development Community of the LOD Platform

[draft - working document]

### Premise:

The [LOD Platform](#) is a proprietary commercial system developed by Casalini Libri/@Cult, serving as the technological platform for the [Share Family initiative](#) and created under the guidance of the library community.

Note: while the standard participation model to LOD Platform-based services is SaaS promoted by Casalini Libri/@Cult, the present document aims to propose an alternative solution to exploit the services.

The goal of what is defined here as a *Distributed Development Community (DDC)* is to enable expert institutions, library IT departments, and technical partners to contribute to the development of extensions and integrations, without creating forks or deviations from the LOD Platform core components.

The establishment of a *Distributed Development Community* ensures faster development timelines by encouraging broader participation in the LOD Platform development process and, at the same time, enables the dissemination of know-how within a wider community, supporting more sustainable use and the long-term management of a more robust and consolidated LOD Platform.

14

# Sustainability and Openness as Reinforcing Forces

 **Openness and sustainability go hand in hand.**

Share-VDE proves these principles don't conflict — they strengthen each other.

 **Shared funding, open access.**

By building infrastructure together and keeping metadata open, the community ensures long-term equity and resilience.

 **The Share Family in action.**

Libraries can govern and grow open bibliographic ecosystems — without ever closing the data.

# Major influencing aspects

## 🌟 A Community Vision Leading the Way

Guiding the transition into a new, connected bibliographic ecosystem driven by collaboration and shared purpose.

## 🧩 Where Collaboration Becomes Innovation

Applications span across:

- 🌿 *Collaborative cataloguing* to maintain authoritative shared data
- 🔍 *Entity discovery* for richer user experiences
- 📊 *Collection analysis and retention cooperation*
- 🔄 *Joint lending services* built on reconciled, trusted data

## 🚀 Reaching Critical Mass

The growing number of adopters ensures impact, visibility, and long-term sustainability.

## 🤝 Power of Consortia

Consortia involvement amplifies collaboration — turning shared vision into shared infrastructure.

# The Share Family approach

## Co-operative

Shared tools for collaborative data management

## Sustainable

Optimisation of efforts for the benefit of all members

## Open

Interoperability for increased discovery of collections

## Inclusive

Diversity for enhancement and equality of access to knowledge

## Dynamic

Flexibility and interaction are central to the Share Family

Find out more

<http://bit.ly/44rnqpA>





# Thank you!

**Tiziana Possemato**  
tiziana.possemato@atcult.it

Share Family information  
are available here:

